



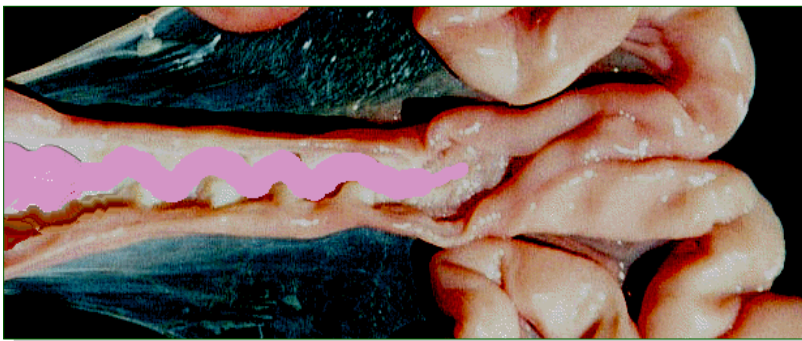
ABSOLUTE CATHETERS

AbsoluteSOW™ + AbsoluteGILT™ Catheters

TOTALLY SAFE DEEP INSEMINATION

Deep insemination has many advantages, in saving time, and improving poor conception and farrowing rates, but some catheters are difficult to use, and can even cause trauma to the sows in inexperienced or inexperienced hands.

Absolute Catheters use a soft latex rubber membrane to penetrate the cervix, and there is no chance at all that this can harm the sow.



Hydraulic pressure forces the soft latex rubber membrane to invert through the cervix.

Absolute Catheters are available in two versions:

Code no: 04/4019 AbsoluteSOW™

Code no: 04/4024 AbsoluteGILT™

The gilt catheter has a smaller foam tip, and a shorter latex tube.



Rotech Livestock Equipment Limited

Woodhorn Lane, Oving, Chichester
PO20 2BX, England

Tel: (+44) (0)1243 787115

Fax: (+44) (0)1243 531847

E-mail: admin@rotechuk.com

Website: www.rotechuk.com





ABSOLUTE CATHETERS

The Absolute Catheter

appears to be virtually the same as any other modern foam-tipped catheter, **but** on close inspection, you will see that a tube specially made from soft latex material is inside-out within the shaft of the catheter. This will invert and pass through the cervix by hydraulic pressure when the semen dose container is squeezed. **There is no chance that this can cause any trauma to the sow.**

- IMPROVE CONCEPTION RATE
- SAVE TIME
- NO SPECIAL TRAINING REQUIRED
- SOW-FRIENDLY



The secret of using **Absolute Catheters** is **not to stimulate the sow** in any way. Stimulation will cause the cervix to grip the catheter (*the "lock" you seek when inseminating with a "normal" catheter*), and this will make it more difficult to pass the membrane through it to the uterus.

But uniquely, the **Absolute Catheter** membrane will "balloon" or "herniate" to gently open the cervix if required. The membrane will do this several times if necessary, each time gradually penetrating further through the cervix until the tip emerges into the uterus itself, and the semen is instantly deposited there, where it will be ready to fertilise the eggs upon ovulation. The operator will know for sure that it has worked, because the semen dose will have left its original container.

Absolute Catheters work with any of the commonly used semen packs.

Rotech Livestock Equipment Limited

Woodhorn Lane, Oving, Chichester
PO20 2BX, England

Tel: (+44) (0)1243 787115

Fax: (+44) (0)1243 531847

E-mail: admin@rotechuk.com

Website: www.rotechuk.com

